



Juha I. Uitto

Czech Evaluation Society
Annual meeting
16 June 2022

What's included in the Book?



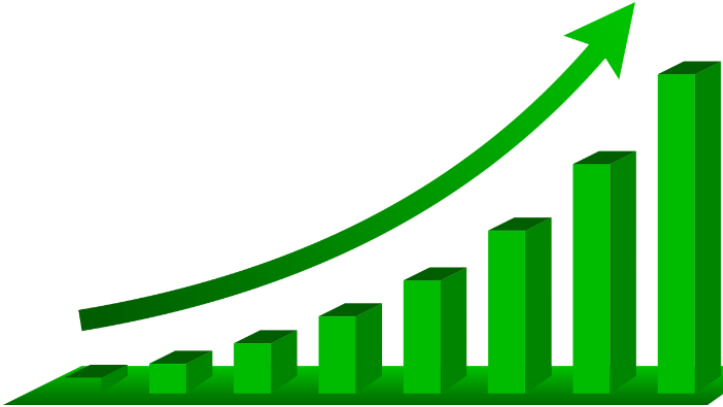
**TRANSFORMATIONAL
CHANGE**



SUSTAINABILITY



Climate Change



Methods

Definition

Transformational change is deep, systemic, sustainable change with large-scale impact in an area of global environmental concern.

Adopted from IEG. 2016. Supporting Transformational Change for Poverty Reduction and Shared Prosperity.

4 criteria

RELEVANCE

DEPTH OF CHANGE

SCALE OF CHANGE

SUSTAINABILITY

Relevance

- Climate Change
- Biodiversity
- Land Degradation
- Chemicals and Waste
- International Waters
- Sustainable Forest Management

Internal Factors

- Quality of implementation
- Quality of execution
- Pre-intervention analytical and advisory activities
- Partnerships with donors

Outcome

- Depth of change
- Scale of change



TRANSFORMATIONAL MECHANISM

A mechanism to expand and sustain the impact of the intervention (through mainstreaming, demonstration, replication, or catalytic effects)



Ambition level and focus (of intervention objectives)

- Depth of change (market and system focus)
- Scale of change

Contextual Conditions

- Government ownership and support
- Implementation capacity
- Policy environment
- NGO & community participation
- Private sector participation
- Economic and market conditions

Sustainability

- Financial
- Economic
- Environmental
- Social
- Political

A transformative multifocal area program

Case study

Sustainable Land and Ecosystem Management Partnership PROGRAM (SLEM), India



SLEM-MP focused on rehabilitation of degraded bamboo forests



SLEM-U targeted 20 micro watersheds while working with Van Panchayats



SLEM-N sustainable shifting cultivation through participatory planning

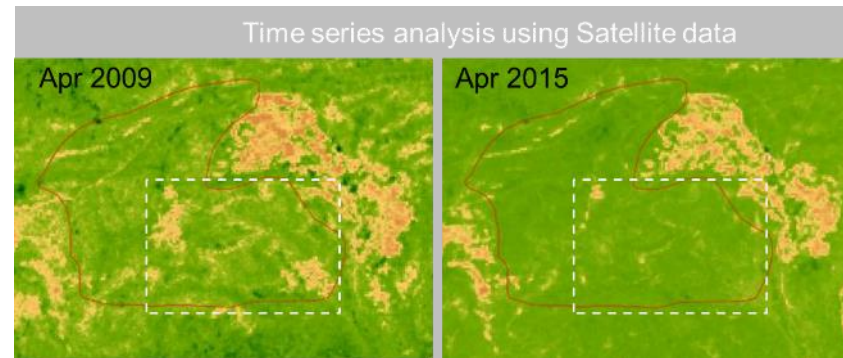
Adopted a multipronged and tailored approach - multifocal, multiple agencies, and diverse context, and issues

A transformative multifocal area program

Case study

Sustainable Land and Ecosystem Management Partnership PROGRAM (SLEM), India

RESULTS



SLEM-MP helped improve vegetation cover; vegetation index (NDVI) increase by 10% 2009-15; significant improvement inside project area than outside.



SLEM-U helped reduce fire-affected areas by 61 percent



SLEM provided livelihood benefits, supported land rights and tenure reforms, and gender equality

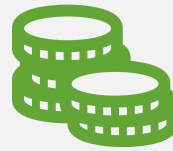
Success factors for transformational change



Clear ambition in design



Addressing market and system changes through policies



Mechanisms for financial sustainability



Quality of implementation and execution



May be achieved by projects of different size

Implications for Evaluation

Holistic view

Context matters!!

Systems approach

*Integration between human and natural
systems*

Attention to unintended consequences

Quantitative and qualitative approaches